

# CRi

Choice. Respect. independence.

# 2019 Calendar

## 2018 Annual Report





# 2018 *A Year in* REVIEW

*Dear Friends,*

What an amazing 2018! From launching new programs & expanding into new communities, to breaking ground on multiple residences & providing care to over 1,000 individuals with mental health needs & developmental disabilities, your generous donations & selfless actions helped improve the future of the people we support. We couldn't be more grateful.

In September 2018, we refreshed our brand from Community Residences, Inc, to CRi, because we are so much more than just a residential provider. We launched a new website, implemented new social media strategies & outlets, & continued working on our strategic framework so we could be better for those we support. Each of these are an indication of the growth we have experienced in 2018 & we are so humbled & inspired to be a part of this journey.

Our CRi stakeholders are amazing, year in & year out. Many of you are deeply connected with our programs & individuals, & have been for decades. We are incredibly proud to have your support. Since CRi opened its doors in 1975, a dedication to choice, respect, & independence has guided our work.

This calendar illustrates the accomplishments that you helped us achieve in the last year. We believe that by joining together, we can continue to create communities guided by the values we hold dear. We invite you to get in touch about how you can get more involved with our mission, we thank you for your generosity, & we wish you happiness & prosperity in 2019 & beyond!



*Andrew Schneider (right)*  
Board Chair

*With Gratitude,*



*Arthur Ginsberg (center)*  
President & CEO

**Keep in  
Touch**

14160 Newbrook Drive, 1st Floor, Chantilly, VA 20151  
(703) 842-2300 | [www.MyCRi.org](http://www.MyCRi.org) | [info@MyCRi.org](mailto:info@MyCRi.org)



# Happy New Year!

2019

On behalf of the individuals we support, the CRI Leadership Team would like to thank you for your generosity in 2018 & beyond!

## 2018 Boards of Directors

### COMMUNITY RESIDENCES, INC. BOARD OF DIRECTORS

Andrew Schneider - Chair, John Bruggeman (Jack) - Vice-Chair/Secretary, Michael Nathan - Treasurer, Matt Bartley, Richard Brewster, Peri-Anne Chobot, Steven Dunn, Arthur Ginsberg - President/CEO, Hartley (Lee) Jones, John Liljegren, Renee Pietrangelo

### COMMUNITY RESIDENCES FOUNDATION, INC. BOARD OF DIRECTORS

John Bruggeman (Jack) - Chair, Terry Hurley - Secretary/Treasurer, Anthony Caputy, Arthur Ginsberg - President / CEO, Christine Plummer

### COMMUNITY HAVENS, INC. BOARD OF DIRECTORS

Michael Foster - Secretary/Treasurer, Drew Brown, Steven Dunn, Arthur Ginsberg - President/CEO, Jon Kinney, Thomas Skelly

### COMMUNITY RESIDENCES OF ARLINGTON, INC. BOARD OF DIRECTORS

Andrew Schneider - Chair, Michael Nathan - Secretary / Treasurer, John Bruggeman (Jack), Arthur Ginsberg - President/CEO

### RESIDENTIAL YOUTH SERVICES. INC. BOARD OF DIRECTORS

Brian Winterhalter - Chair, Peri-Anne Chobot, Arthur Ginsberg - Secretary/Treasurer



Board Member, Matt Bartley, with President & CEO, Arthur Ginsberg

### CRI Senior Leadership Team

Arthur Ginsberg  
Terry Hurley  
Kelsey DeWispelaere  
Ron George  
Lynn MacDonald  
DeAnne Mullins

# MISSION, VISION AND VALUES

## Our Mission

CRi is dedicated to providing personalized resources to youth & adults with mental health needs & developmental disabilities.

## Our Vision

CRi envisions a world in which all people have the choice, respect, & the resources needed to live a fulfilling life with dignity & purpose.

## Our Values

**COMMUNITY.** Sense of belonging in connected communities; CRi believes in the power of community, the value of all people, the value of the sense of belonging, & strengthening the communities where we live & work.

**EMPOWERMENT.** Set personal goals. Make positive choices. Whole-person support; CRi offers resources to empower people to set personal goals & make positive choices, while delivering integrated, whole-person support based on individual need.

**EXCELLENCE.** Professional. High Quality. Best we can be; CRi develops and delivers first class programs & services, focusing on clinical quality & professional excellence.

**INTEGRITY & TRANSPARENCY.** True to people & families. True to staff. True to ourselves; CRi embraces honesty, transparency, & accountability in all aspects of our mission delivery.



**INNOVATION.** Boldly taking initiative and advocating to advance lives; CRi pushes boundaries to advocate for resources & cutting edge technology to assist in the advancement of the lives of others.

**RESPONSIBLE STEWARDSHIP.** Innovative, ethical, & determined to use resources wisely; As an organization that positively impacts lives & depends heavily on public funding, CRi is devoted to finding the most financially efficient, responsible, & successful ways to deliver on our mission.

**DID YOU KNOW ? IN 2018, 36% OF THE SERVICES PROVIDED BY CRi WERE TO INDIVIDUALS WITH DEVELOPMENTAL DISABILITIES.**



# There are a number of reasons to love CRi!

Choice + Respect + independence



**LOVE US ONLINE!**

@MyCRiNow | [www.mycr.org](http://www.mycr.org)

“ I love CRi because of the passionate & caring people who work here.   
 -Lynn MacDonald, Chief of Staff ”







# Big Easy Bash

Make a BIG impact &  
BASH stereotypes!



At the 2018 Big Easy Bash, you made a BIG impact & helped to BASH stereotypes at Top of the Town in Arlington, VA. We can't wait to see you at the next Big Easy Bash on March 5, 2019!





# Springtime SNAPSHOTS





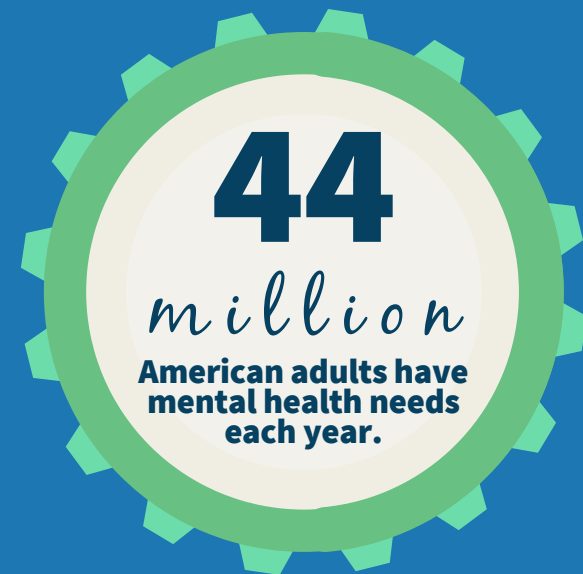
*May Is*

## **MENTAL HEALTH AWARENESS MONTH**

This year, 44 million American adults will experience serious mental health needs. Only 50% will seek treatment due to stigma & discrimination.\*



\*NAMI



What are you doing to support mental health awareness? Show your support online with  
**#MENTALHEALTHMATTERS**



**Our 2018 EmbRACE 5K & Fun Run at Burke Lake Park was an inclusive event for the whole family! Because of your generosity, we were able to raise nearly \$40,000 to support individuals with mental health needs & developmental disabilities. We can't wait to see you this year!**







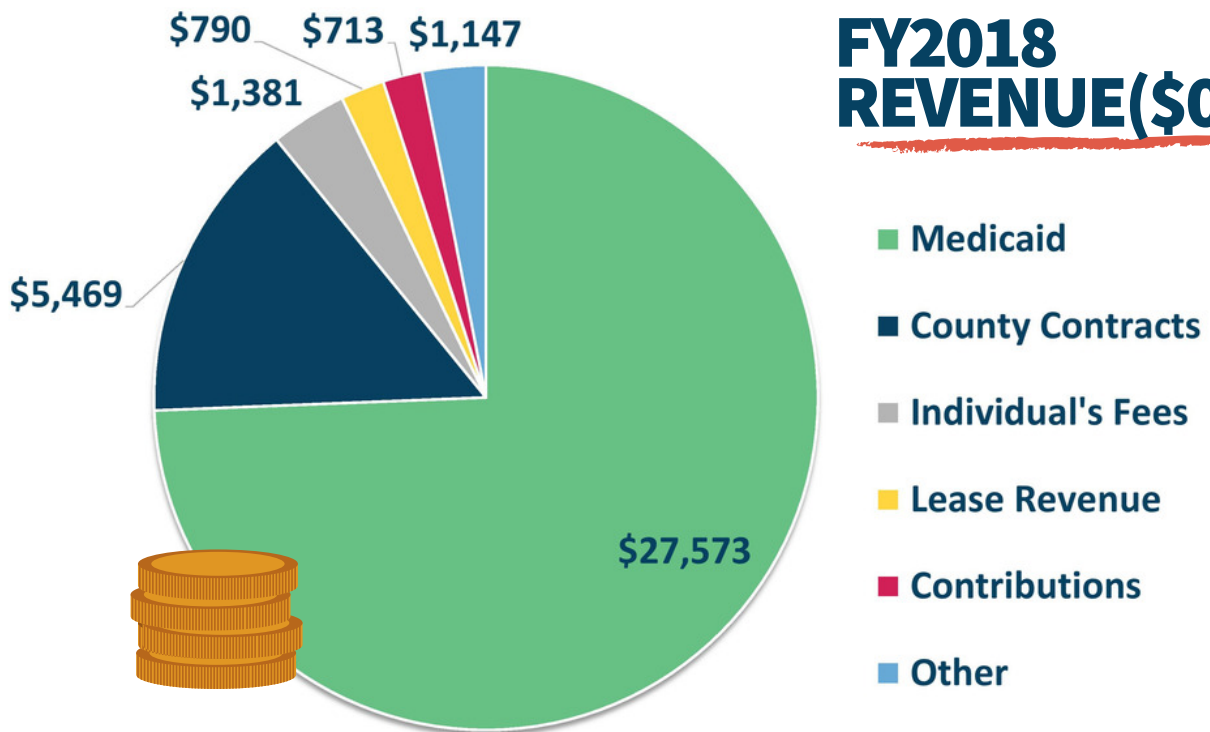
# INDEPENDENCE DAY

**NICS - Newbrook Fully-integrated day program offers opportunities for independent living, volunteering, exposure to jobs & other independent skills to individuals with behavior needs & developmental disabilities in the local community.**





# FY2018 REVENUE(\$000)



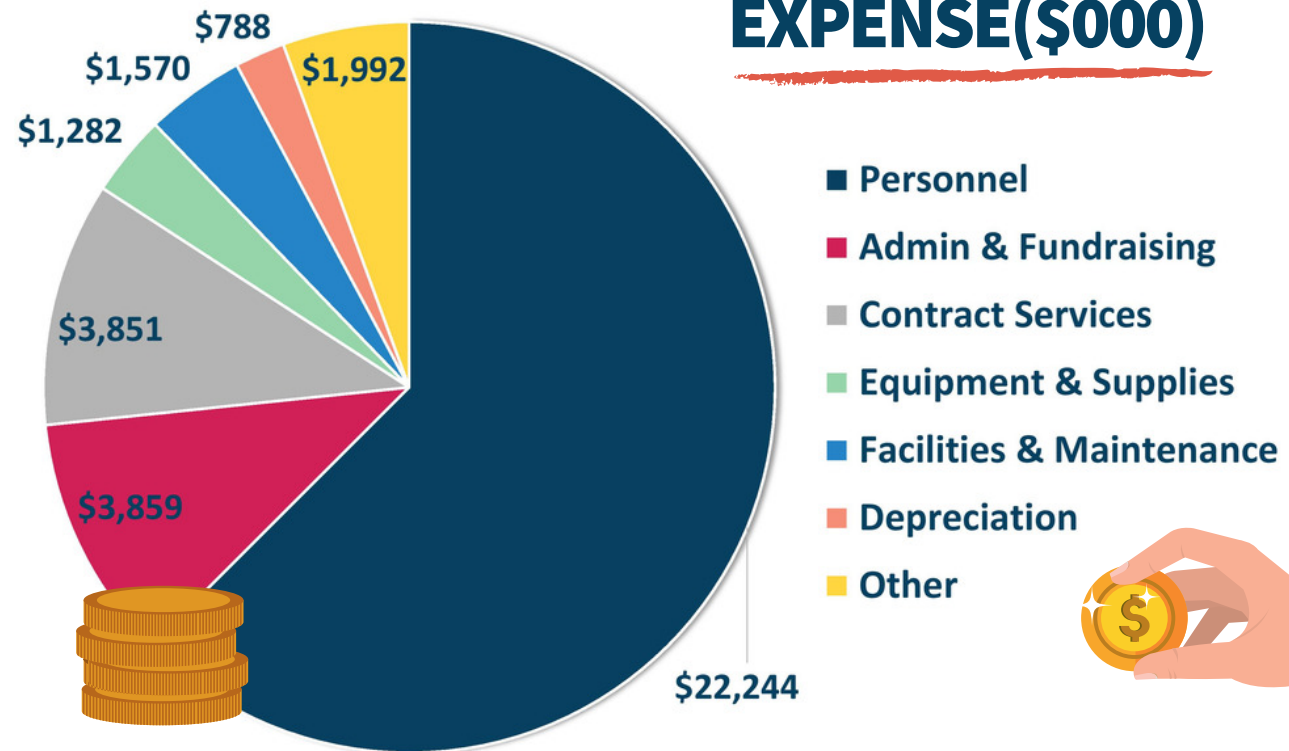
**89 cents of every dollar received goes DIRECTLY to CRI services & supports!**

**TOTAL REVENUE: \$37,073**

**VS**

**TOTAL EXPENSE: \$35,586**

# FY2018 EXPENSE(\$000)







**Did you know CRI  
has intramural  
kickball?**

**Each Saturday during  
the fall, 5 teams,  
comprised of  
individuals from 19  
programs, get together  
for an intramural  
kickball league. Please  
join us as spectators !**

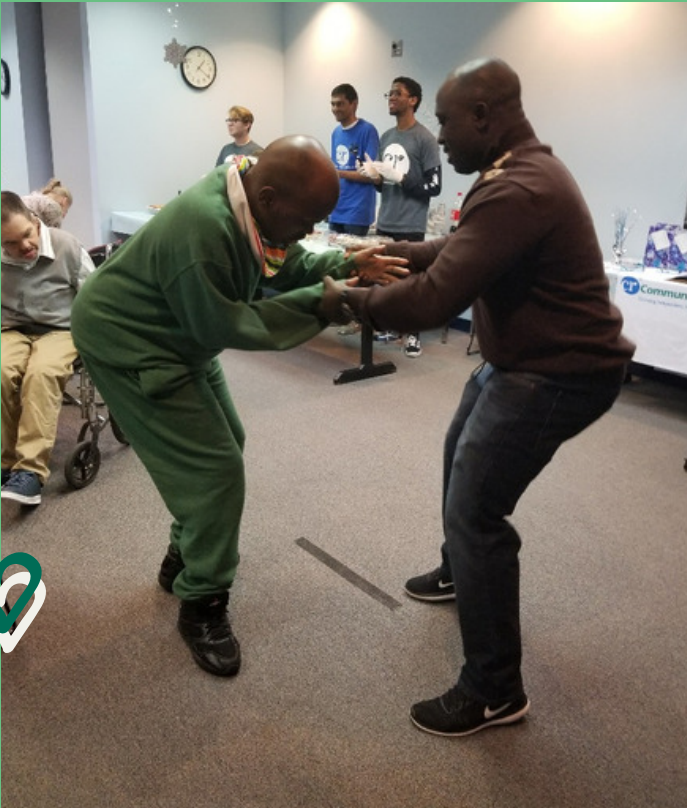






# WORLD MENTAL HEALTH DAY IS

• October •  
**10**



**64%**  
of services CRI  
provided in FY18  
were mental  
health related





ArtWorks Alive!





# #GIVINGTUESDAY is December 3!

**KICK OFF HOLIDAY  
GIVING WITH A GIFT ON  
GIVING TUESDAY!**

A gift to our Comfort & Joy  
Holiday Giving Campaign  
provides immediate  
support to those who need  
you most. Your generous  
gift will make a difference  
in the lives of individuals by  
supporting services that  
provide choice, respect, &  
independence this holiday  
season & beyond!



*Give the gifts*



*of choice,*



*respect,*



*& independence.*



# FY18 *By the Numbers*

**1,005**

CRi supported 1,005 individuals with developmental disabilities & mental health needs.

**\$79,000**

CRi spent \$79,000 on out-of-pocket expenses on eyeglasses, transportation, clothing, hygiene items & other necessities for individuals, as they were uncovered by public funds.



**2,220**

CRi volunteers donated 2,220 hours of service, valued at \$55,266.

**\$1.57M**

CRi spent \$1.57 million on facilities to support both residential & day programs in the community.

**\$1.28M**

CRi purchased \$1.28 million worth of program supplies, furniture & adaptive equipment for program spaces & other facilities in FY18.



**50+**

CRi operated over 50 supportive programs in FY18.

**500**

CRi partnered with over 500 volunteers/community partners during FY18.

**600+**

CRi employed over 600 people in FY18.



# A SPECIAL THANK YOU TO OUR GENEROUS *Community Partners*

