



cri

FY2019 ANNUAL REPORT

FY19 Annual Report



In 2019



104

**INDIVIDUALS
SUPPORTED**

10

**PROPERTIES
OWNED**



505

EMPLOYEES



MAKING NEW FRIENDS

Fitting in at Newbrook Loudoun

The first thing John* said when he arrived at the Newbrook Loudoun Day Program was “I want friends.” He had never had any before.

John spent the first portion of his life with a caregiver, in a 1-to-1 ratio. Rarely leaving the house to interact in the community, he found himself frustrated & unable to connect. Something was always missing. Then his family found CRI.

From that day, caring staff saw to it that John always felt supported & heard. They focused on helping him build relationships, find his strengths, & engage with his peers. Today, John spends his time at his Day Program singing, laughing, & creating 3D action figures for his new group of friends.

*name has been changed to protect privacy



Thanks to CRI's supportive team, he has never felt so respected or included.

John's family has noticed a 180-degree turnaround in his social interaction at home as well. He now initiates conversation more often, has become a self-advocate, & has started verbally expressing his love for his family & friends. The relief that his family feels is immeasurable, as they know that their son has the best possible care in an inclusive and nurturing environment. It doesn't hurt that John loves to go to Newbrook each day.

The smile on his face each time anyone walks through the door definitely reflects the safety & security John feels at CRI.



the grace home

a capital campaign to build
a better community **together**

Grace Community Church Pledges \$250K to Help Build a New Home for Aging Residents with Disabilities

2019 was an incredibly generous year! CRI community partners, Grace Community Church (Arlington/Falls Church) pledged to raise \$250,000 through a Capital Campaign called "The Grace Home Project" to support the building of a home on North Glebe Road in Arlington, Virginia.

Just before Easter of 2019, Lead Pastor John Slye, Jr., of Grace Community Church, began looking into ways his congregation could come together to embrace & help build a better local community, "this search led me to CRI, & I consider it a privilege to be able to share in this partnership."

This new residence will be named "The Grace Home," & will serve as a safe place for CRI residents to live, learn valuable skills & receive support as they age & navigate the path of living independently.

As residents in CRI programs age, it is critical that we keep up with their individual needs as they age. This generous gift will allow us to do just that.

According to CRI President & CEO Arthur Ginsberg, the project is critical to our mission.

"The current home is inaccessible to aging residents," Ginsberg stated, "so we've made the decision to replace the home." He went on to say that CRI is "very excited about the opportunity to receive support from Grace Community Church to help us build a new home on this site."

We couldn't be more thankful & honored for this opportunity to work together in support of our community.

Thank you, Grace Community Church!



A photograph of two women smiling and looking towards the camera. They are positioned in front of a large window that offers a view of a city skyline at dusk or night, with lights from buildings visible in the distance. The woman on the left has dark hair and is wearing a green cardigan over a patterned top, adorned with several necklaces including purple and gold beads. The woman on the right has long red hair, wears glasses, and a black top with a vibrant floral pattern of red and white flowers. She is also wearing multiple necklaces, including gold and purple beads, and a silver necklace with a circular pendant. The overall mood is positive and celebratory.

**Small acts,
when multiplied by
millions of people,**

can change the world.

Howard Zinn



CRi Completes Miller House in Falls Church

The first home of its kind in the City of Falls Church, Miller House was built to support residents with disabilities.

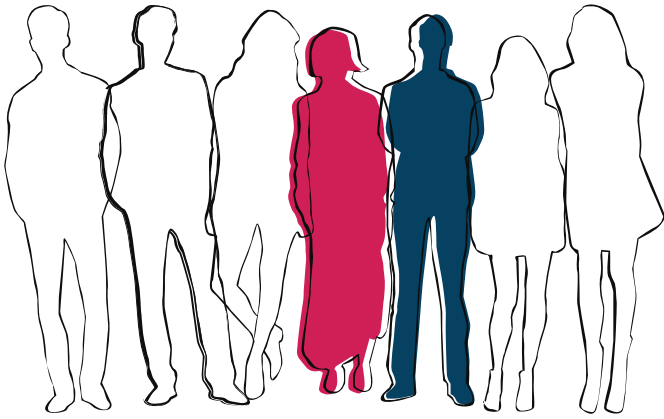
In 2019, The City of Falls Church & CRi collaborated to meet a critical need of City residents with the construction of "Miller House," a home built to support young adults with disabilities & mental health needs. Miller House is now home to five residents on their journey toward choice, respect & independence in their community. The land for this home was donated by the City of Falls Church.

In recent years, it has been a priority for families, CRi & the Falls Church City Council to create a group home where individuals with intellectual disabilities could live as independently as possible. Four residents in this brand new home on North Washington Street require 24-hour support care, while one of the residents lives on their own level of the home in an apartment.

Sharon Schoeller, mother of one Miller House resident, found CRi on her search for a place where she knew her daughter would feel safe & cared for. "We are so grateful that she will be secure & in a new home where she can thrive," Schoeller said. "I have been in communication with the other parents & they all feel an enormous sense of relief that their children will be in an excellent situation."

We are very proud of our partnership with the City of Falls Church, state & local agencies, & the families of those who reside in the home. Moving into a new home is a big step for many residents, & we look forward to future opportunities for the people living there.

CRi is dedicated to providing personalized resources to youth & adults with mental health needs & developmental disabilities.



Our Impact

BECAUSE OF YOU, WE WERE ABLE
TO DO SO MUCH IN FY2019.

\$275,832

was paid in property taxes to
counties & cities where CRI
provides direct support

77

volunteer service
projects took place

50+

supportive programs
were operated

15

homes were equipped
with new life-saving AEDs,
valued at \$16,000, thanks
to the Firehouse Subs
Foundation

\$49,022

worth of in-kind donations
were received

550+

people directly
participated in CRI
fundraising events

52%

of the individuals CRI
supports received
mental health services

\$.89

of every dollar received by
CRI was spent on direct
support services

WHERE We SERVE

Fairfax Co, VA: 28%
Arlington Co, VA: 22%
Anne Arundel Co, MD: 15%
Baltimore Co, MD: 8%
Prince William Co, VA: 8%
Loudoun Co, VA: 7%
Montgomery Co, MD: 6%
Richmond, VA: 3%

Addressing the National DSP Crisis

A Direct Support Professional (DSP) is someone who assists an individual with a disability to lead as independent a life as possible. DSPs contribute to the community, assist with activities of daily living, & encourage attitudes & behaviors that enhance community inclusion.



The work DSPs do is critical, but due the low level of reimbursements to providers, they're often left underpaid. This leads to high turnover rates & vacancies to be filled. The DSP crisis affects people with disabilities all over the country & it is especially critical here at CRi.

It is estimated that nationally more than one million new direct support positions will need to be filled by 2022. CRi stands with our Direct Support Professionals & will advocate for them tirelessly until changes are made.

It is imperative to possess a skilled, properly trained & fairly paid workforce in order to provide top-notch support to those with disabilities & mental health needs.

\$11.76

**National Average,
DSP Hourly Wage**



45%

**of DSPs leave their
POSITION**

within one year, nationally

Throughout 2019, CRi leadership, employees, individuals & other stakeholders met in a number of different capacities to have difficult, but necessary, conversations regarding the DSP crisis.

We invited our Virginia State Senators & Delegates in the districts where we provide to visit our homes & programs & advocated for a livable wage for our DSPs.

Through these conversations & meetings, we were able to educate legislators of the work that CRi does in the community. We were also able to work together to advocate for increased funding & increases in Medicaid reimbursements in 2020.



*Delegate Hala Ayala (HD-51)
Visits the Peachtree Home*

Growth & Expansion

As part of our goal to expand our footprint into new areas & provide quality supports & services in additional communities, CRi spent much of FY19 on a mission to expand its reach & provide support in new areas. Through the hard work & determination of the CRi team, local cities, counties, & elected officials, generosity from the community, & an engaged, supportive group of family stakeholders, CRi flourished in 2019.

In addition to the completion of Miller House in Falls Church, VA, CRi also opened the Newbrook Day Program in Loudoun County, VA, started the relocation process from Riverside to Nicolet Circle in Richmond, VA, a new & more accessible home. We also completed renovations at Peachtree Court, a new home in Lake Ridge, VA.

The opening of these new programs make it possible for more people to receive support from CRi in the communities in which they live.

Since 1975, we have been focused on meeting people where they are, building strong communities with the help of supportive families, & implementing services that make sense to fit individual needs.

CRi has experienced significant growth in the last 5 years, with revenue increasing by 32%. We look forward to 2020 & the opportunity to further expand our much-needed programs & services.



**In FY19, CRi
Supported**

180 NEW INDIVIDUALS



Our Dedicated Volunteers

In FY2019, your generosity made all the difference.

In fiscal year 2019, CRI volunteers made a MAJOR impact on our programs & on the individuals we support. From home renovation projects & upgrades to collection drives & large-scale landscaping, our volunteers were a huge part of our success by leading 77 projects!

Volunteers & corporate community partners, such as churches & corporations, bring incredible value to the organizations they support & provide opportunities for projects that might otherwise go unfunded.



Did you know that the value of ONE volunteer service hour in America is valued at \$26.75!?



In Fiscal Year 2019,
volunteers provided

2,968

service hours to CRI,
valued at an amazing

\$79,394



Join Us!

volunteer@mycri.org

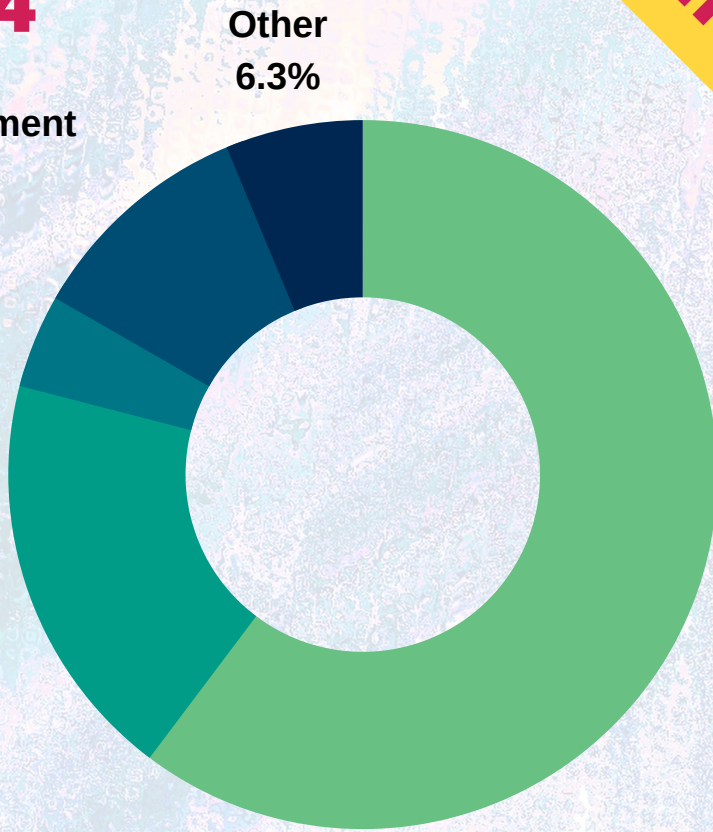
Expenses

\$43,543,664

Program Management
10.4%

Equipment & Supplies
4.3%

Facilities & Services
18.8%



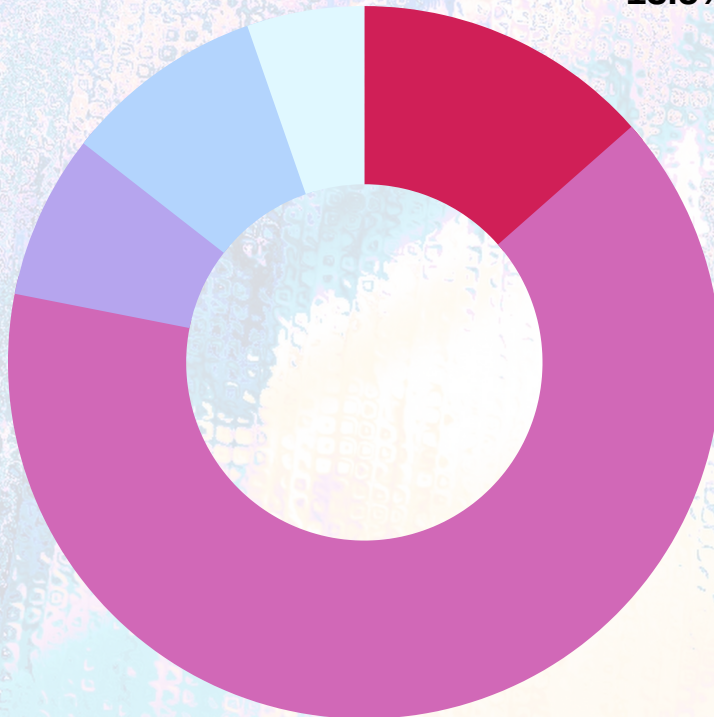
**FY19
Financials**

Program Reimbursements
9.1%

Lease/Grant/Event(s)
7.5%

Other
5.3%

State/Co./Local
13.5%




Revenue

\$43,508,558



Medicaid
64.6%



A close-up photograph of a middle-aged man with short, light brown hair and glasses. He is wearing a dark suit jacket over a light-colored checkered shirt and a dark tie. He is speaking into a microphone on the right side of the frame. The background is dark and out of focus, with some bokeh light effects.

**Your greatness is
not what you have,
it's what you give.**

Alice Hocker

Jack Bruggeman, CRi Board Chair - FY19

BOARDS OF *Directors*

CRi BOARD

Jack Bruggeman, Chair
Peri-Anne Chobot, Vice Chair/Secretary
Arthur Ginsberg, President & CEO
Michael Nathan, Treasurer
Newman Ainsley
Matt Bartley
Richard Brewster
Steven Dunn
John Liljegren
Renee Pietrangelo
Andrew Schneider

CRi FINANCE COMMITTEE

Michael Nathan, Chair
Jack Bruggeman, ex-officio
Lee Jones
Thomas Skelly
Steven Valdez

CRi GOVERNANCE COMMITTEE

Peri-Anne Chobot, Chair
Jack Bruggeman, ex-officio
Richard Brewster
Andrew Schneider



CR FOUNDATION BOARD

Jack Bruggeman, Chair
Arthur Ginsberg, President & CEO
Terry Hurley, VP Admin/CFO
Heather Lyons, Secretary & Treasurer
Mike Fitzgerald
Paul Gallagher
Christine Plummer

COMMUNITY RESIDENCES OF ARLINGTON BOARD

Jack Bruggeman, Chair
Arthur Ginsberg, President & CEO
Michael Nathan, Secretary/Treasurer
Andrew Schneider

RESIDENT YOUTH SERVICES BOARD

Brian Winterhalter, Chair
Arthur Ginsberg, President & CEO
Andrew Schneider, Secretary/Treasurer
Peri-Anne Chobot

COMMUNITY HAVENS BOARD

Steven Dunn, Chair
Michael Foster, Secretary/Treasurer
Arthur Ginsberg, President & CEO
Drew Brown
Michael Foster
Jon Kinney



Donate Today!



14160 Newbrook Drive, Chantilly, VA 20151
mycri.org | info@mycri.org | @MyCRiNow



CRi

Choice. Respect. independence.